

TAPIT+

programming interface

What is TAPIT+?

The TAPIT+ programming interface provides an extremely simple and straightforward method of configuring Lifeline 400, 4000 and 4000+ home units remotely, using a lap top computer or PC, rather than at the response centre or by using a keypad.

Once a unit has been configured, the programming file can be saved and then recalled as many times as required, therefore allowing a large number of units to be programmed using the same file, quickly and easily.

How does it work?

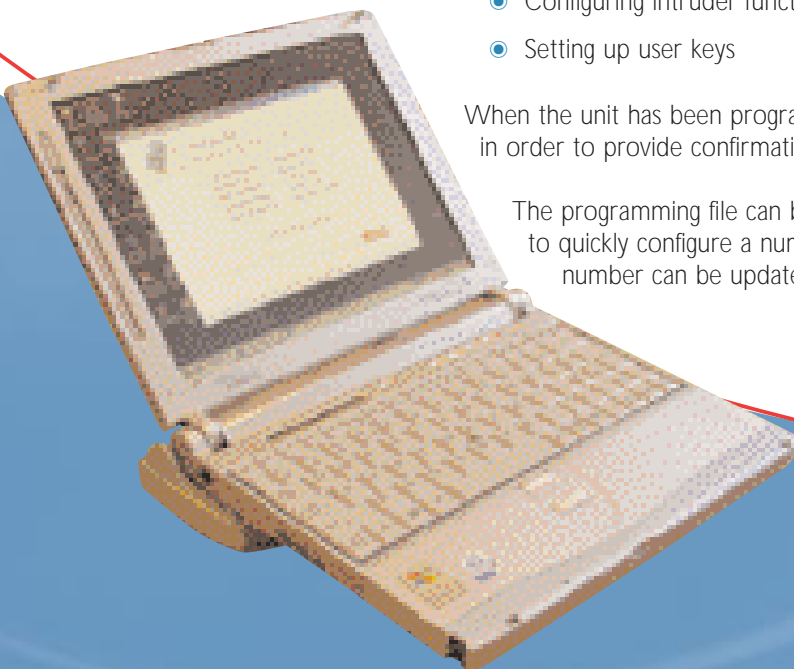
Following loading of the TAPIT+ software, the interface box is simply connected between the Lifeline home unit and PC / lap top computer. The user is then presented with an intuitive programming screen covering all aspects of configuring the Lifeline home unit connected to it.

Configuration options include the following:-

- Assigning location information to sensors
- Programming telephone numbers and setting up call sequences
- Determining inactivity monitoring and periodic call time periods
- Configuring intruder functionality
- Setting up user keys

When the unit has been programmed, a configuration summary can be requested in order to provide confirmation that the unit has been set up correctly.

The programming file can be stored and recalled time and time again in order to quickly configure a number of units, and on each occasion, the unit ID number can be updated automatically.



All the reassurance you need

Tunstall

TAPIT+ programming interface

Why is it needed?

Specifically designed to provide a simple method of programming a Lifeline home unit without the need for response centre involvement, the TAPIT+ interface is ideal when the response centre is busy, where more detailed programming is required or for the remote programming of units.

Who is it for?

TAPIT+ is ideal for busy response centres that wish to support a greater number of people in the community through the use of sensors and peripherals linked to Lifeline units.

Features & benefits

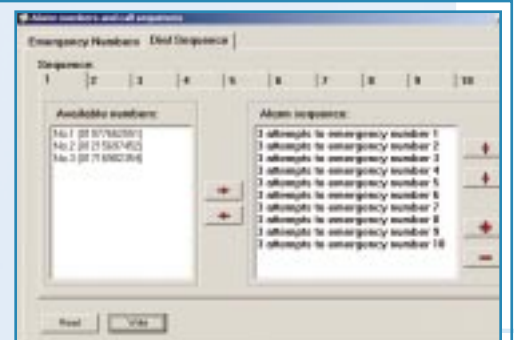
- A simple user interface allows even the most complex programming tasks to be performed quickly and easily.



SELECT THE ITEM THAT YOU WANT TO CONFIGURE FROM THE COMPREHENSIVE MENU.

- Intuitive programming screens reduce the need to consult manuals.

BUILD UP TO 10 CALL SEQUENCES AND DETERMINE THE NUMBER OF DIAL ATTEMPTS PER TELEPHONE NUMBER.



erface



- Store and recall configuration files to allow the rapid programming of a number of units, with each unit ID number being updated automatically.

This can be achieved in 4 easy steps:-

The TAPIT+ linked to a Lifeline 400 and lap top

STEP 1
Select which items you would like to program from the main menu e.g. set up a call sequence, inactivity monitoring etc.

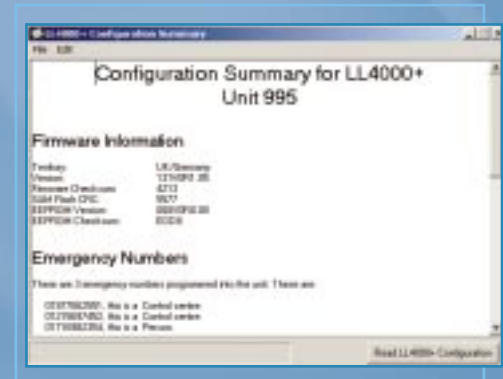
STEP 2
Configure the unit using the easy to follow programming screens - this screen can be used to enter up to 10 telephone numbers

STEP 3
Store the configuration file to PC or lap top

STEP 4
When you wish to use the stored configuration file to program the additional units, simply select it and click the 'Program' button- even the ID number is changed automatically

TAPIT+ programming interface

- The configuration summary report provides instant confirmation that a unit has been programmed correctly.
- Programming a unit remotely without the aid of the response centre provides complete flexibility to deliver the optimum solution on site.
- Allows you to get the most out of your Lifeline home units to provide an enhanced service.
- Allows you to easily address the needs of a wider client group by tailoring care packages to cater for the requirements of each individual.



The minimum recommended PC/lap top computer specification for TAPIT+:-

- Intel Pentium class system 90 MHz or higher
- Microsoft Windows XP, 2000, NT4.0, ME or 95/98
- Memory: 32MB of RAM
- 30MB free hard disc space
- VGA or higher resolution monitor
- Mouse or other windows pointing device

Technical details:

Weight: 350g
Dimensions: 147 x 26 x 72 (WxHxD)
Power: 50mA

Environment:

Temperature: Operating temperature (to perform to full specification) = 0C to 45C, Storage = -10C to 50C.

Humidity: Operating relative humidity (non condensing to perform full specification) = 0 to 80%, Storage relative humidity (non condensing) = 0 to 93%

Standards:

EMC: EN 55022:1998, EN 50082-1 1997
Safety: EN 60950:1992
CE: Compliant
Warranty: 1 year return to base
Design, Manufacture, Installation and Service: ISO9001: 2000
Part number 36900/01

Please note - a lap top computer or PC is not supplied with TAPIT+

Tunstall

www.tunstallgroup.com

Our policy of continual development means that product specification and appearance may change without notice. Tunstall Telecom Limited is a member of Tunstall Group Ltd. ©2003 Tunstall Group Ltd.

© TUNSTALL and LIFELINE are registered trade marks of Tunstall Telecom Limited

Tunstall Telecom Limited, Whitley Lodge, Whitley Bridge, Yorkshire DN14 0HR
Tel: 01977 661234 Fax: 01977 662450 Email: sales@tunstall.co.uk

